

CURBSIDE PICKUP DOS AND DON'TS

All containers, bundles and bulky wastes and recycling shall be placed at the curb no earlier than 4:00 p.m. on the day prior to the scheduled collection day. Empty containers shall be removed from the curb no later than 7:00 p.m. on the scheduled collection day.

Always put your materials out to the curb the night before your collection day. The Township Sanitation/Recycling trucks start at 6:00a.m.

Remember - Sanitation/Recycling trucks are not on a schedule. One week your containers may be picked up at 10:00 AM and the next week at 6:30AM. Please have all items for pick-up at the curb by 6:00AM.

Recycling

See single stream recycling guidelines attached.

Solid Waste

Whenever possible, we ask residents to dispose of household refuse in plastic bags before placing in refuse containers. This allows our crews to move more easily through the routes. All refuse containers must be commercially manufactured and intended specifically for the purposes of containing refuse. These containers cannot be larger than 35 gallons or heavier than 60 lbs when filled. Containers not meeting these specifications will not be emptied. All containers should have lids and be kept cleaned and sanitary. If your cans are damaged please replace them.

Corrugated Cardboard

Cardboard must be flattened and tied in bundles no larger than 3 feet by 3 feet or can be stacked in another box.

Bundles must be free of foreign material and may not include chipboard such as pizza, soap, cereal and gift boxes. Collection in Districts 1, 2 & 4 will be on EVEN DATED Wednesday; Districts 3, 5 & 6 on ODD DATED Wednesdays. There is no collection during a holiday week.

Vegetative & Yard Waste

All vegetative waste including grass clippings, leaves, twigs, garden refuse, shrub trimmings, and tree branches up to 3 inches in diameter and up to 3 feet long must be recycled. All bushes and branches should be tied and no longer than 3 feet in length. Large paper bags or hard reusable containers (Maximum 60 lbs.) properly marked "Yard Waste" must be used. Yard waste in plastic bags will NOT be collected, but they may be brought to the recycling center and dumped out. Branches, twigs and brush must be tied in bundles.

IMPORTANT: No logs or stumps will be picked up at the curbside. They must be brought to the recycling center.

Mandated Recyclable Materials

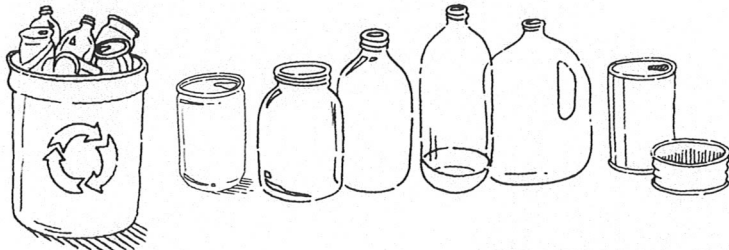
Morris County, New Jersey



The law requires all waste generators in Morris County to keep the materials that are listed below separate from garbage to be recycled ("source separation"). These materials must remain separated from garbage until they reach an appropriate recycling facility. Everyone is a waste generator and must keep the recyclable materials listed below separate from garbage whether at home, at work or at play. If a location does not have separate receptacles for these mandated recyclable materials, speak to the management and tell them recycling is the law. Waste generators include, but are not limited to, residents, (single-family homes, multifamily complexes, hotels), office buildings, businesses, schools, restaurants, shopping centers, medical facilities, government buildings, recreational areas, and construction sites.

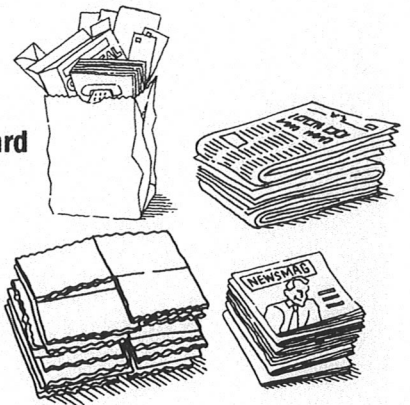
Bottles and Cans

- Aluminum Cans
- Glass Bottles and Jars
- Plastic Bottles (coded 1 and 2)
- Steel (Tin) Cans



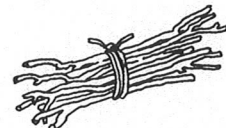
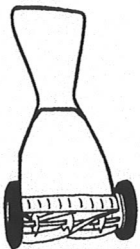
Paper

- Newspaper
- Corrugated Cardboard
- Mixed Paper



Mandated Organics

- Leaves
- Grass Clippings
- Brush
- Natural Wood Waste - Logs, Stumps, Branches and Other Wood Tree Parts



Additional Mandated Recyclables

- Used Motor Oil



- Metal Appliances



- Whole Tires

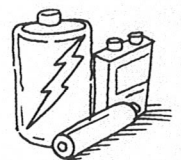


- Hazardous Dry Cell Batteries

- Lead-Acid Batteries

- Oil-Contaminated Soil

- Televisions, Computers, Tablets, Laptops, Monitors, Desktop Printers, Desktop Faxes




Recycling "NO-NO's"

Do Not Put These Items Into The Curbside Recycling Bin



Do not recycle

- No loose shredded paper (must be in a clear plastic bag)
- No hardcover books
- No waxed paper or waxed cardboard
- No scrap metal
- No metal appliances, pots, pans
- No electronic waste, batteries, cell phones, computers, toys
- No plant material or food waste
- No clay pots, window panes, mirrors, glass vases, ceramics, light bulbs, Pyrex™
- No rubber, nylon, or vinyl
- No clothing or textiles
- No hoses

- No plastic bags (except for clear plastic bags containing shredded paper)
- No small pill bottles
- No VHS/VCR tapes, CDs/DVDS
- No plant trays or flower pots
- No straws, spray pumps, nozzles
- No Styrofoam™ or paper to go containers
- No motor oil, gas, antifreeze containers
- No PVC
- No plastics coded: 
- No liquids
- No garbage
- No hangers

DON'T BAG 

Recyclables

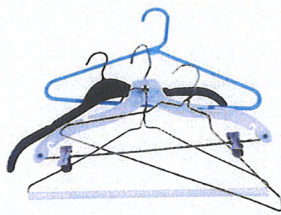


NO PLASTIC BAGS IN RECYCLING

Thank you for recycling right!



Remove plastic packing material from cardboard boxes before recycling the boxes



Hangers do not belong in the curbside recycling bin. Check with local charity organizations, scrap metal dealers, dry cleaners or neighbors to see if they can be reused.

Recycle if Clean & Dry

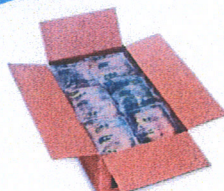


PLASTIC

BAGS / FILM / WRAP

how2recycle.info

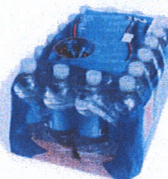
* Recycle clean, dry plastic bags and film packaging



Air Pillows



Grocery & Retail Bags labeled #2 (HDPE) or #4 (LLDPE)
Tip: Store in plastic bag until next trip to the store



Case Wrap



Newspaper Bags



Bread Bags (with crumbs shaken out)



Produce Bags



Food Storage Bags



Napkin, Paper Towel, Bathroom Tissue and Diaper Wrap Packaging

Look for this label on film products like these:

plasticfilmrecycling.org

* Plastic bags, plastic film, and plastic wraps are not accepted in the curbside recycling container. Many supermarkets have drop-off recycling bins for these items. To find a location where they can be recycled, visit: plasticfilmrecycling.org